

5-HT_{1B} Receptor-Mediated Serotonergic Modulation of Methylphenidate-Induced Locomotor Activation in Rats

Janusz Borycz¹, Agustin Zapata¹, César Quiroz¹, Nora D Volkow^{1,2} and Sergi Ferré^{*1}

¹Department of Health and Human Services, National Institute on Drug Abuse, Intramural Research Program, National Institutes of Health, Baltimore, MD, USA; ²Department of Health and Human Services, National Institute on Alcohol Abuse and Alcoholism, National Institutes of Health, Bethesda, MD, USA

Previous studies have shown that the dopamine (DA) uptake blocker methylphenidate, a psychostimulant widely used for the treatment of attention-deficit hyperactivity disorder (ADHD), prevents the neurotoxic effects of the highly abused DA releaser methamphetamine. However, there is a lack of information about the pharmacological interactions of these two drugs at the behavioral level. When systemically administered within an interval of 2 h, previous administration of methylphenidate (10 mg/kg, intraperitoneal (i.p.)) did not modify locomotor activation induced by methamphetamine. On the other hand, previous administration of methamphetamine (1 mg/kg, i.p.) markedly potentiated methylphenidate-induced motor activation. With *in vivo* microdialysis experiments, methamphetamine and methylphenidate were found to increase DA extracellular levels in the nucleus accumbens (NAs). Methamphetamine, but not methylphenidate, significantly increased the extracellular levels of serotonin (5-HT) in the NAs. Methamphetamine-induced 5-HT release remained significantly elevated for more than 2 h after its administration, suggesting that the increased 5-HT could be responsible for the potentiation of methylphenidate-induced locomotor activation. In fact, previous administration of the 5-HT uptake blocker fluoxetine (10 mg/kg, i.p.) also potentiated the motor activation induced by methylphenidate. A selective 5-HT_{1B} receptor antagonist (GR 55562; 1 mg/kg), but not a 5-HT₂ receptor antagonist (ritanserin; 2 mg/kg, i.p.), counteracted the effects of methamphetamine and fluoxetine on the motor activation induced by methylphenidate. Furthermore, a 5-HT_{1B} receptor agonist (CP 94253; 1–10 mg/kg, i.p.) strongly and dose-dependently potentiated methylphenidate-induced locomotor activation. The 5-HT_{1B} receptor-mediated modulation of methylphenidate-induced locomotor activation in rat could have implications for the treatment of ADHD.

Neuropsychopharmacology (2008) **33**, 619–626; doi:10.1038/sj.npp.1301445; published online 9 May 2007

Keywords: methylphenidate; methamphetamine; fluoxetine; dopamine; serotonin; 5-HT_{1B} receptor

INTRODUCTION

Psychostimulants can be classified as ‘dopamine (DA) uptake blockers’ and ‘DA releasers’, according to their molecular mechanism of action. DA uptake blockers, such as cocaine, methylphenidate, or GBR 12909, bind to and inhibit DA transporter (DAT) function (Torres *et al*, 2003; Elliott and Beveridge, 2005). DA releasers, such as amphetamine or methamphetamine, also bind to DAT and they enhance neurotransmitter release by reversing DA transport (Elliott and Beveridge, 2005; Sulzer *et al*, 2005). It has been shown that DA uptake blockers can also block reverse transport, thereby antagonizing the increase in extracellular DA induced by a DA releaser (Zetterstrom

et al, 1988; Hurd and Ungerstedt, 1989; Villemagne *et al*, 1999; Baumann *et al*, 2002). Furthermore, DA uptake blockers and DA releasers exert differential effects on vesicular monoamine transporter-2 (VMAT-2) function, which seems to depend on a redistribution of VMAT-2 to different cellular compartments, and it has been suggested that the neurotoxic effects of amphetamines are related to their effects on VMAT-2 trafficking (Sandoval *et al*, 2003; Hanson *et al*, 2004).

The above-mentioned experimental findings suggest that DA uptake blockers, which have been suggested to have low abuse liability, such as methylphenidate or GBR 12909 (Chait, 1994; Skjoldager *et al*, 1993; Preti, 2000; Volkow and Swanson, 2003), could be used to counteract the addictive and neurotoxic effects of highly abused DA releasers, such as methamphetamine (Barr *et al*, 2006). In fact, methylphenidate has been shown to counteract the effects of high-dose methamphetamine administration on VMAT-2 function and persistent DA deficits in rats (Sandoval *et al*, 2003; Hanson *et al*, 2004). However, to our knowledge, there is no information about the pharmacological interactions of

*Correspondence: Dr S Ferré, Department of Health and Human Services, National Institute on Drug Abuse, Intramural Research Program, National Institutes of Health, 5500 Nathan Shock Drive, PO Box 5180, Baltimore, MD 21224, USA, Tel: +1 410 550 1586, Fax: +1 410 550 1648, E-mail: sferre@intra.nida.nih.gov
Received 29 October 2006; revised 5 April 2007; accepted 6 April 2007

methylphenidate with methamphetamine at the behavioral level. Furthermore, the few results that have been reported about the influence of GBR 12909 on the behavioral effects of methamphetamine seem to be opposite to the expected effects. Thus, in drug discrimination experiments, GBR 12909 potentiated the effects of methamphetamine in rats and monkeys (Holtzman, 2001; Czoty *et al*, 2004).

In the present study, we analyzed the pharmacological interactions between methylphenidate and methamphetamine in rats at the behavioral level. Instead of finding that methylphenidate alters methamphetamine-induced locomotor activity, it was methamphetamine which modified, potentiated, locomotor activity induced by methylphenidate. Further behavioral and biochemical experiments (including *in vivo* microdialysis) allowed us to find a key role of serotonin (5-HT) and 5-HT_{1B} receptors in the potentiating effect of methamphetamine on methylphenidate-induced locomotor activity. Furthermore, a 5-HT_{1B} receptor agonist strongly and dose-dependently potentiated the locomotor activation induced by methylphenidate, a finding that merits investigation vis-a-vis its possible implications for the treatment of attention-deficit hyperactivity disorder (ADHD).

MATERIALS AND METHODS

Animals and Drugs

Male Sprague-Dawley rats, weighing 300–350 g, were used in all experiments. Animals, housed in groups of two, were maintained in facilities fully accredited by the Association for the Assessment and Accreditation of Laboratory Animal Care; all experimentation was conducted in accordance with the guidelines of the Institutional Care and Use Committee of the Intramural Research Program, National Institute on Drug Abuse. Methylphenidate hydrochloride and fluoxetine were obtained from Sigma (St Louis, MO), (+)-methamphetamine (*d*-methamphetamine) hydrochloride was from the NIDA Pharmacy (Baltimore, MD), the selective 5-HT_{1B} receptor antagonist GR 55562 dihydrochloride and the 5-HT_{1B} receptor agonist CP 94253 hydrochloride were from Tocris (Ellisville, MO), and the selective 5-HT_{2A} receptor antagonist ritanserin from RBI (Natick, MA). Ritanserin was dissolved in 10% 2-Hydroxypropyl- β -cyclodextrin (Sigma) and all the other drugs were dissolved in saline.

Locomotor Activity

Locomotion was measured as beam crossings in 40 × 40 cm open field (AccuScan Instruments, Columbus, OH). There were two different experimental designs. In the first group of experiments, rats were habituated to the apparatus for 90 min, then they were given the first intraperitoneal (i.p.) treatment (methylphenidate, 10 mg/kg, methamphetamine, 1 mg/kg, or fluoxetine, 10 mg/kg) and after 120 min they received the second i.p. treatment with either methylphenidate or methamphetamine (the same doses). Some animals were administered 5-HT receptor antagonists (GR 55562, 1 mg/kg, i.p. or ritanserin, 2 mg/kg, i.p.) as first treatment simultaneously with methamphetamine or fluoxetine. Locomotion was recorded from the beginning of the habituation period up to 120 min after the second

treatment. In the second group of experiments, rats received different doses of the 5-HT_{1B} receptor agonist CP 94253 (0, 1, 3, or 10 mg/kg, i.p.) 120 min after they were introduced in the open field, followed 30 min later by methylphenidate (10 mg/kg, i.p.). Some animals were administered the 5-HT_{1B} antagonist GR 55562 (1 mg/kg, i.p.) 30 min before CP 94253 or saline administration. Locomotion was recorded from the beginning of the habituation period up to 120 min after GR 55562 administration. The statistical analysis used was the 'summary measures' method (Matthews *et al*, 1990). In the first group of experiments, the average of the locomotor counts accumulated in 10-min periods during the 60 min after the second i.p. treatment was used as the summary measure. In the second group of experiments, the average of the locomotor counts accumulated in 10-min periods during the 120 min after CP 94253 administration was used as the summary measure. Non-paired Student's *t*-test or one-way ANOVA, followed by Newman-Keuls test were used for statistical comparisons, using GraphPad Prism 4.0 software (San Diego, CA).

In Vivo Microdialysis

Concentric microdialysis probes were prepared as described previously (Pontieri *et al*, 1995). Animals were anesthetized with 3 ml/kg of Equithesin (4.44 g of chloral hydrate, 0.972 g of Na pentobarbital, 2.124 g of MgSO₄, 44.4 ml of propylene glycol, 12 ml of ethanol and distilled H₂O up to 100 ml of final solution; NIDA Pharmacy), and probes were implanted in the shell of the nucleus accumbens (NAc) (one probe/animal; coordinates with respect to bregma: anterior, +2.2; lateral, -0.9; ventral, -7.4 from the dura). The experiments were performed on freely moving rats 24 h after probe implantation. Separate experiments, with different animals, were performed for DA and 5-HT measurements. A Ringer solution (in mM) of 144 NaCl, 4.8 KCl, 1.7 CaCl₂, and MgCl₂ 1.2 was pumped through the dialysis probe at a constant rate of 1 and 0.5 μ l/min for 5-HT assay. After a washout period of 90 min, samples were collected at 20- and 30-min intervals to measure DA and 5-HT content, respectively. After 60 min of collecting samples for baseline, the rats were given the first i.p. treatment (methylphenidate, 10 mg/kg or methamphetamine, 1 mg/kg) and 2 h later they were given a second i.p. treatment with methylphenidate and samples were collected for another 2 h. At the end of the experiment, rats were killed with an overdose of Equithesin and methylene blue was perfused through the probe. The brain was removed and placed in a 10% formaldehyde solution, and coronal sections were cut to verify probe location. DA content was measured by reverse high-performance liquid chromatography (HPLC) coupled to an electrochemical detector, as described in detail previously (Pontieri *et al*, 1995). 5-HT was determined by HPLC coupled to electrochemical detection. The chromatographic system consisted of a CMA/200 refrigerated microinjector (CMA microdialysis, North Chelmsford, MA), a BAS PM-80 pump (BAS, West Lafayette, IN), and a BAS LC-4C amperometric detector. The mobile phase (0.1 M sodium phosphate, 1.6 mM sodium decanesulfonic acid, 0.8 mM EDTA, pH 3.9, and 9% acetonitrile plus 0.5 ml triethylamine (vol/vol)) was filtered through a 0.22 μ m nylon filter and degassed by a BAS on-line degasser and pumped through the system at a

flow rate of 0.45 ml/min. 5-HT was separated on a BAS C18 column (100 × 2.0 mm × 3 µm) and detected on a glassy carbon working electrode at an oxidation potential of + 800 mV vs Ag/AgCl. Dialysate 5HT levels were quantified by external standard curve calibration, using peak area for quantification. All the reagents used for the mobile phase were analytical grade. The limit of detection (which represents three times baseline noise levels) for DA and 5-HT was 0.5 and 0.25 nM, respectively. DA and 5-HT values were transformed as percentage of basal values (mean of the three values before the drug injection) and transformed values were statistically analyzed. The 'summary measures' method (Matthews *et al*, 1990) was also used for statistical analysis of the effect of different drugs and drug combinations, using the average of the three values previous to the first drug administration (basal levels) and the average of the values obtained during the first 60 min after the first or the second i.p. treatment as the summary measures. Bifactorial ANOVA, followed by Newman-Keuls test and non-paired Student's *t*-test were used for statistical comparisons (GraphPad Prism 4.0 software). A non-paired Student's *t*-test was also used to analyze differences in the DA levels obtained from the sample just before the administration of methylphenidate (second drug administration) between animals pretreated with methylphenidate or methamphetamine.

RESULTS

Effects of Pretreatment with Methamphetamine or Methylphenidate on the Locomotor Activation Induced by Methamphetamine and Methylphenidate

Doses of 1 mg/kg of methamphetamine and 10 mg/kg of methylphenidate were used in all the experiments, as there were found to be equipotent doses in their ability to produce locomotor activation in rats in pilot studies. No significant differences in the locomotor activation induced by methamphetamine were observed between the groups that received a previous administration of either methamphetamine or methylphenidate 2 h before (non-paired Student's *t*-test: $p > 0.05$; $n = 7$ in both groups) (Figure 1). On the other hand, a significant increase in the locomotor activation induced by methylphenidate was observed in the group that received methamphetamine 2 h before, compared with the group pretreated with methylphenidate (non-paired Student's *t*-test: $p < 0.05$; $n = 7$ in both groups) (Figure 2).

Effects of Pretreatment with Methamphetamine or Methylphenidate on the Changes of the Extracellular Concentrations of DA and 5-HT in the NAs Induced by Methylphenidate

In vivo microdialysis experiments were undertaken to examine the mechanism involved in the methamphetamine-induced potentiation of the locomotor activation mediated by methylphenidate. Extracellular concentrations of DA and 5-HT were measured in the NAc during the administration of methamphetamine (1 mg/kg) and methylphenidate (10 mg/kg), followed by a second administration of methylphenidate (10 mg/kg) 2 h later. As previously

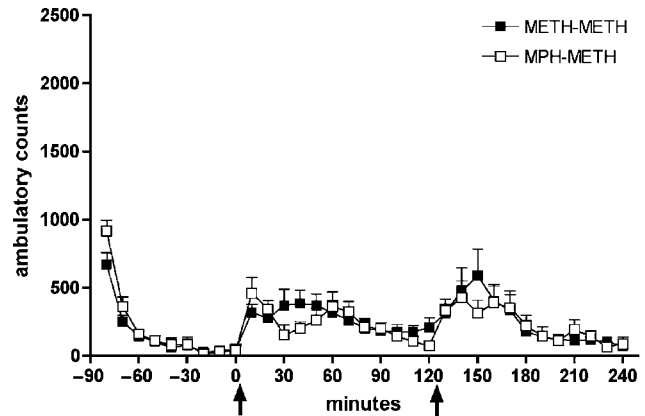


Figure 1 Effect of pretreatment with methamphetamine (METH; 1 mg/kg, i.p.) or methylphenidate (MPH; 10 mg/kg, i.p.) on the locomotor activation induced by METH (1 mg/kg, i.p.). Results represent mean \pm SEM of locomotor counts accumulated in 10-min periods. Arrows represent the time of drug administration. No significant differences in locomotor activity (average of the locomotor counts accumulated in 10-min periods during the 60 min after the second i.p. treatment) were observed between both groups (non-paired Student's *t*-test: $p > 0.05$; $n = 7$ in both groups).

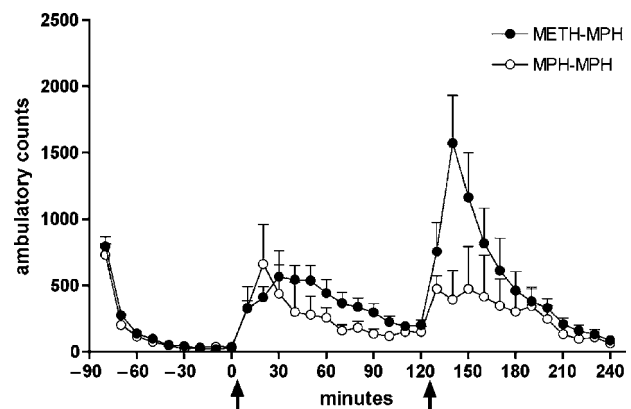


Figure 2 Effect of pretreatment with methamphetamine (METH; 1 mg/kg, i.p.) or methylphenidate (MPH; 10 mg/kg, i.p.) on the locomotor activation induced by MPH (10 mg/kg, i.p.). Results represent mean \pm SEM of locomotor counts accumulated in 10-min periods. Arrows represent the time of drug administration. A significant increase in locomotor activity (average of the locomotor counts accumulated in 10-min periods during the 60 min after the second i.p. treatment) was observed in the group that received METH 2 h before, compared with the group pretreated with MPH (non-paired Student's *t*-test: $p < 0.05$; $n = 7$ in both groups).

reported (Kuczenski *et al*, 1995; Kuczenski and Segal, 1997), immediately after its administration, methamphetamine produced a significant increase in the extracellular concentrations of DA and 5-HT (up to about 400% of basal levels in both cases; bifactorial ANOVA: $p < 0.01$ in both cases; $n = 7$ /group), whereas methylphenidate selectively increased DA (up to 500% of basal levels) without modifying the extracellular concentration of 5-HT (bifactorial ANOVA: $p < 0.01$ and > 0.05 , respectively; $n = 6-7$ /group) (Figure 3a and b). The administration of methylphenidate 2 h after pretreatment with either methylphenidate or methamphetamine produced very similar effects on DA extracellular levels (up to 400–500% of basal levels;

bifactorial ANOVA: $p < 0.01$ both cases; $n = 6-7/\text{group}$) (Figure 3a). Importantly, DA levels just before the administration of methylphenidate in the two groups of animals pretreated with methylphenidate or methamphetamine did not reach basal levels, but they were not statistically different (non-paired Student's *t*-test; $p > 0.05$; $n = 6-7/\text{group}$) (Figure 3a). Then, no significant differences in the extracellular levels of DA after methylphenidate administration were observed between the group pretreated with methamphetamine and the group pretreated with methylphenidate (non-paired Student's *t*-test; $p > 0.05$; $n = 6-7/\text{group}$) (Figure 3a). On the other hand, methamphetamine-induced increases in dialysate 5-HT had not completely fallen to baseline at the time of the second drug (methylphenidate) and the same effect was observed in saline-treated animals pretreated with methamphetamine (up to about 170% of basal levels; bifactorial ANOVA: $p < 0.01$; $n = 7/\text{group}$) (Figure 3c), which indicates that methamphetamine is responsible for the increased 5-HT levels observed 2–3 h after its administration and that methylphenidate does not modify this effect.

Effect of Pretreatment with Fluoxetine on the Locomotor Activation Induced by Methylphenidate

The results from microdialysis experiments suggested that an increase in the extracellular concentration of 5-HT could mediate the methamphetamine-induced potentiation of the locomotor activation induced by methylphenidate. Therefore, we checked if the selective inhibitor of the 5-HT transporter (SERT) fluoxetine could also potentiate the effect of methylphenidate. Fluoxetine (10 mg/kg), like methamphetamine, was also administered 2 h before methylphenidate and did not produce any effect on locomotor activity up to 2 h after its administration, when it significantly potentiated locomotor activation induced by methylphenidate (non-paired Student's *t*-test: $p < 0.05$; $n = 6-7/\text{group}$) (Figure 4).

Effect of 5-HT Receptor Antagonists on Methamphetamine- and Fluoxetine-Induced Potentiation of Locomotor Activation Induced by Methylphenidate

Previous studies have indicated that 5-HT can play a permissive or inhibitory role in the motor-activating effects of direct and indirect dopaminergic agonists by acting on different 5-HT receptor subtypes with 5-HT_{2A} and 5-HT_{1B} receptors being stimulatory and 5-HT_{1C} being inhibitory (Castanon *et al*, 2000; Fletcher *et al*, 2002, 2006; Przegalinski *et al*, 2002; Bishop and Walker, 2003). Therefore, we investigated the possible ability of the 5-HT₂ receptor antagonist ritanserin (2 mg/kg) and the 5-HT_{1B} receptor antagonist GR 55562 (1 mg/kg) to counteract methamphetamine- and fluoxetine-induced potentiation of the locomotor activation induced by methylphenidate. GR 55562, but not ritanserin, significantly counteracted the ability of methamphetamine to potentiate locomotor activation induced by methylphenidate (one-way ANOVA: $p < 0.05$ and > 0.05 , respectively; $n = 7/\text{group}$) (Figure 5). Similarly, GR 55562, but not ritanserin, significantly counteracted the ability of fluoxetine to potentiate locomotor activation

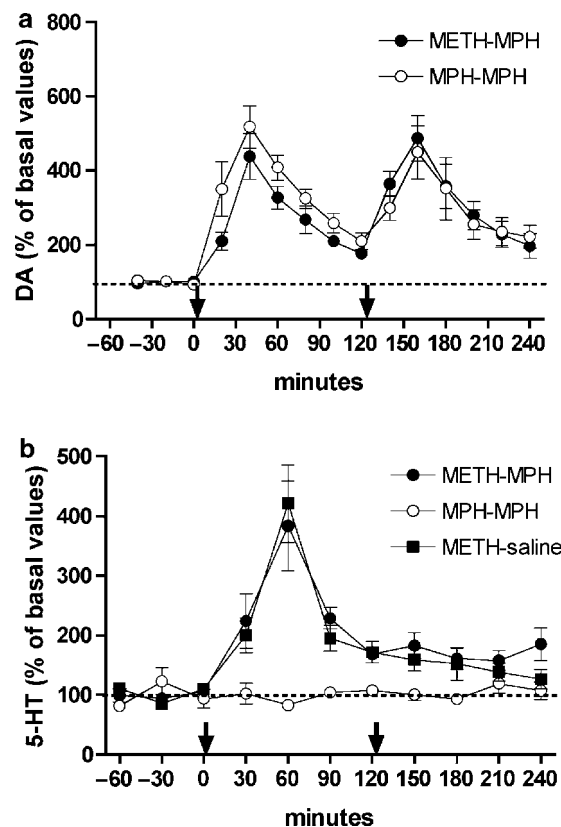


Figure 3 Effect of pretreatment with methamphetamine (METH; 1 mg/kg, i.p.) or methylphenidate (MPH; 10 mg/kg, i.p.) on the extracellular levels of DA (a) and 5-HT (b) in the NAc induced by MPH (10 mg/kg, i.p.). Results represent mean \pm SEM of percentage of basal values. Arrows represent the time of drug administration. The average of the three values previous to the first drug administration (basal levels) and the average of the values obtained during the first 60 min after the first or the second i.p. treatment were used for statistical comparisons. Immediately after its administration, METH produced a significant increase in the extracellular concentrations of DA and 5-HT (bifactorial ANOVA: $p < 0.01$ in all cases; $n = 6-7/\text{group}$). Significantly higher 5-HT extracellular levels were still observed 2 h after METH administration and the same effect was observed in saline-treated animals pretreated with METH (bifactorial ANOVA: $p < 0.01$; $n = 7/\text{group}$). After the first and second administration, MPH significantly increased DA (bifactorial ANOVA: $p < 0.01$ in both cases; $n = 6$), but it did not modify 5-HT extracellular levels (bifactorial ANOVA: $p > 0.05$ in both cases, $n = 7$).

induced by methylphenidate (one-way ANOVA: $p < 0.05$ and > 0.05 , respectively; $n = 6-9/\text{group}$) (Figure 6).

Effect of the 5-HT_{1B} Receptor Agonist CP 94253 on the Locomotor Activation Induced by Methylphenidate

The selective 5-HT_{1B} receptor agonist CP 94253 (1–10 mg/kg) was administered 30 min before methylphenidate and did not produce a significant locomotor activation effect on locomotor activity up to 30 min after its administration, when it very strongly and dose-dependently potentiated locomotor activation induced by methylphenidate. The groups treated with 3 and 10 mg/kg of CP 94253 plus methylphenidate showed significantly higher locomotor activity compared with the group treated with saline plus methylphenidate (one-way ANOVA, $p < 0.05$ and < 0.01 ,

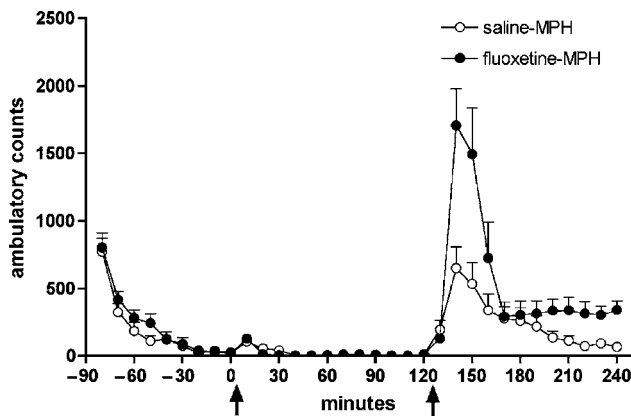


Figure 4 Effect of pretreatment with fluoxetine (10 mg/kg, i.p.) on the locomotor activation induced by methylphenidate (MPH; 10 mg/kg, i.p.). Results represent mean \pm SEM of locomotor counts accumulated in 10-min periods. Arrows represent the time of drug administration. A significant increase in locomotor activity (average of the locomotor counts accumulated in 10-min periods during the 60 min after MPH administration) was observed in the group that received fluoxetine 2 h before, compared with the group pretreated with saline (non-paired Student's *t*-test: $p < 0.05$; $n = 6$ –7/group).

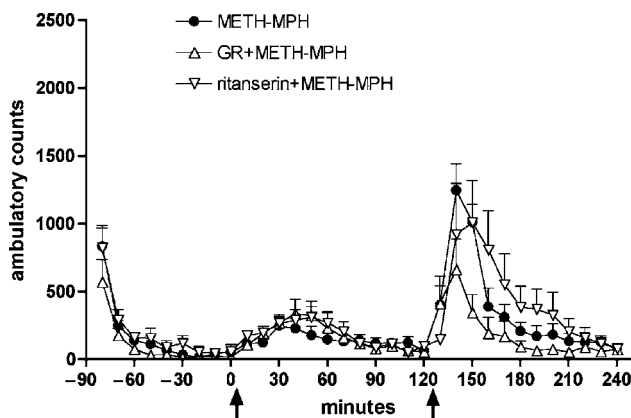


Figure 5 Effect of the 5-HT₂ receptor antagonist ritanserin (2 mg/kg, i.p.) and the 5-HT_{1B} receptor antagonist GR 55562 (GR; 1 mg/kg, i.p.) on the potentiation induced by methamphetamine (METH; 1 mg/kg, i.p.) of the locomotor activation induced by methylphenidate (MPH; 10 mg/kg, i.p.). Results represent mean \pm SEM of locomotor counts accumulated in 10-min periods. Arrows represent the time of drug administration. The 5-HT receptor antagonists were given at the time of METH administration. GR, but not ritanserin, significantly counteracted the effect of METH pretreatment on the locomotor activity (average of the locomotor counts accumulated in 10-min periods during the 60 min after MPH administration) induced by MPH (one-way ANOVA: $p < 0.05$ and $p > 0.05$, respectively; $n = 7$ /group).

respectively; $n = 5$ –7/group) (Figure 7). The effect of the treatment with 10 mg/kg of CP 94253 was significantly counteracted by the previous administration of 1 mg/kg of the 5-HT_{1B} receptor antagonist GR 55562 (one-way ANOVA, $p < 0.05$; $n = 7$ /group) (Figure 7).

DISCUSSION

Methylphenidate, an effective and widely used treatment for ADHD (Volkow and Swanson, 2003; Brown *et al*, 2005), is a

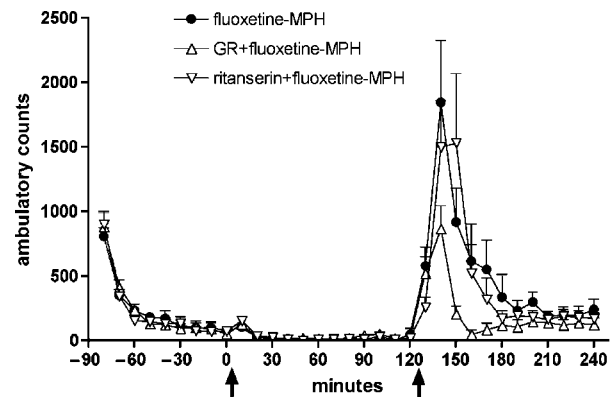


Figure 6 Effect of the 5-HT₂ receptor antagonist ritanserin (2 mg/kg, i.p.) and the 5-HT_{1B} receptor antagonist GR 55562 (GR; 1 mg/kg, i.p.) on the potentiation induced by fluoxetine- (10 mg/kg, i.p.) of the locomotor activation induced by methylphenidate (MPH; 10 mg/kg, i.p.). Results represent mean \pm SEM of locomotor counts accumulated in 10-min periods. Arrows represent the time of drug administration. The 5-HT receptor antagonists were given at the time of METH administration. GR, but not ritanserin, significantly counteracted the effect of fluoxetine pretreatment on the locomotor activity (average of the locomotor counts accumulated in 10-min periods during the 60 min after MPH administration) induced by MPH (one-way ANOVA: $p < 0.05$ and $p > 0.05$, respectively; $n = 6$ –9/group).

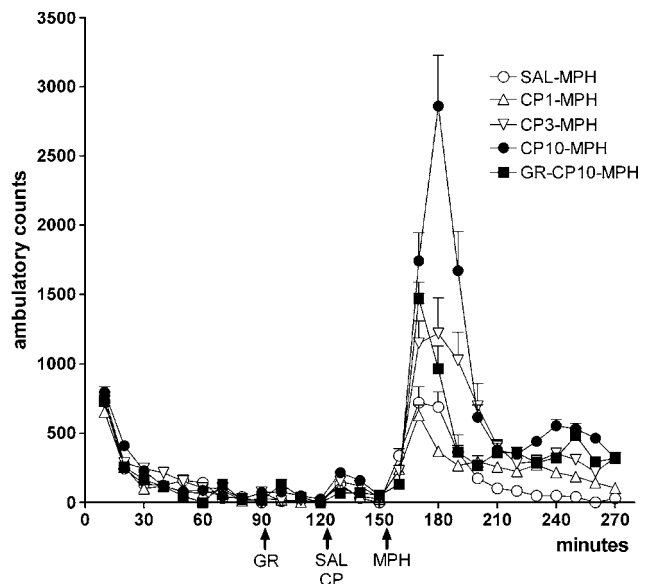


Figure 7 Effect of the 5-HT_{1B} receptor agonist CP 94253 (CPI, CP3, and CP10; 1, 3, or 10 mg/kg, i.p., respectively) with or without previous administration of the 5-HT_{1B} receptor antagonist GR 55562 (GR; 1 mg/kg, i.p.) on the locomotor activation induced by methylphenidate (MPH; 10 mg/kg, i.p.). Results represent mean \pm SEM of locomotor counts accumulated in 10-min periods. Arrows represent the time of indicated drug administration. CP3 and CP10 significantly potentiated locomotor activity (average of the locomotor counts accumulated in 10-min periods during the 120 min after MPH administration) (one-way ANOVA, $p < 0.05$ and $p < 0.01$, respectively; $n = 5$ –7/group) and the effect of CP10 was significantly counteracted by GR (one-way ANOVA, $p < 0.05$; $n = 7$ /group). SAL: saline.

psychostimulant with the ability to increase the extracellular concentrations of DA and norepinephrine (NE), but not 5-HT, in the brain (Kuczenski and Segal, 1997). The mechanism of action responsible for the biochemical profile

of methylphenidate is its ability to interact with DAT and the NE transporter (NET) at much lower concentrations than it interacts with SERT (Han and Gu, 2006). This profile is different to that of cocaine, which binds to DAT, NET, and SERT within a narrow range of concentrations (Han and Gu, 2006). However, the previously suggested weaker reinforcing-addictive properties of methylphenidate compared with cocaine do not seem to depend on their differential monoamine uptake inhibitor profile, but on the differences in their pharmacokinetic properties in the brain (Volkow and Swanson, 2003).

The initial aim of the present study was to analyze pharmacological interactions between methylphenidate and the highly abused and neurotoxic psychostimulant methamphetamine (Barr *et al*, 2006). In our hands, 1 mg/kg of methamphetamine was equipotent to 10 mg/kg of methylphenidate at inducing both locomotor activation and DA release in the NAc. When systemically administered within an interval of 2 h, previous administration of methylphenidate did not modify locomotor activation induced by the subsequent administration of methylphenidate or methamphetamine. Similarly, methamphetamine did not significantly modify the motor activation induced by a second administration of the same drug. In contrast, previous administration of methamphetamine markedly potentiated methylphenidate-induced motor activation. It must be pointed out that the behavioral protocol used in the present study is different to that used in studies showing a rapid-onset type of behavioral sensitization of psychostimulants, where the effect of a high dose (prime) of a psychostimulant potentiates the behavioral effects of a lower dose (probe) of the same or another psychostimulant (Kuczenski and Segal, 1999a, b; Chinen *et al*, 2006). Furthermore, at least in rats, this sensitization seems to be restricted to stereotypies, without affecting locomotion (Kuczenski and Segal, 1999a, b).

As previously reported (Kuczenski *et al*, 1995), methamphetamine was shown to be a very potent 5-HT releaser, whereas methylphenidate did not modify accumbal extracellular 5-HT levels (Kuczenski and Segal, 1997). Methylphenidate produced the same changes in the accumbal extracellular levels of DA after pretreatment with either methylphenidate or methamphetamine, suggesting that methamphetamine-induced potentiation of the locomotor activation induced by methylphenidate is not related to changes in dopaminergic neurotransmission. On the other hand, 5-HT could be involved, as methamphetamine-induced 5-HT release remained significantly elevated for more than 2 h after its administration. Nevertheless, the differences in motor activity patterns of methylphenidate and methamphetamine cannot be explained solely by their different DA and 5-HT responses. Thus, although the doses of both compounds used in the present study were basically equipotent at inducing locomotor activation and at increasing DA extracellular levels in the NAc, only methamphetamine increased 5-HT levels; but when 5-HT was increased concomitantly with methylphenidate, this resulted in much greater locomotor activation than that observed with methamphetamine. One possible explanation could be a different profile of norepinephrine response. In fact, (+)-methamphetamine (also referred as *d*-methamphetamine, the stereoisomer used in the present study) has

been shown to be a poor NE releaser (Kuczenski *et al*, 1995), whereas methylphenidate is very effective at increasing the extracellular levels of NE in different brain areas (Kuczenski and Segal, 2002; Berridge *et al*, 2006).

The involvement of 5-HT in the effects of methamphetamine was supported by the results obtained with the SERT blocker fluoxetine, which also potentiated methylphenidate-induced locomotion, in line with previous studies that have shown that fluoxetine enhances the discriminative and motor-activating properties of cocaine (Cunningham and Callahan, 1991; Herges and Taylor, 1998; Bubar *et al*, 2003). This would imply an additional 5-HT blockade to that induced by cocaine, although it has been suggested that pharmacokinetic effects are involved (Fletcher *et al*, 2004). Nevertheless, central administration of fluoxetine also potentiates cocaine-induced locomotor activation (Bubar *et al*, 2003). In any case, in the present study, the effects of both methamphetamine and fluoxetine were selectively counteracted by the 5-HT_{1B} receptor antagonist GR 55562.

The ability of 5-HT_{1B} receptors to modulate methylphenidate-induced locomotor activation was further analyzed by using the selective 5-HT_{1B} receptor agonist CP 94253 (Koe *et al*, 1992). In a previous study, high doses of CP 94253 produced locomotor activity in mice (Koe *et al*, 1992). Within a lower dose range, in the present study, CP 94253 did not produce a significant locomotor activation in rats during the 30-min period before the administration of methylphenidate, but strongly and dose-dependently potentiated the locomotor activity induced by methylphenidate. As the 5-HT_{1B} receptor antagonist GR 55562 also counteracted the effect of CP 94253, altogether the present results demonstrate that stimulation of 5-HT_{1B} receptors, with either a 5-HT releaser (methamphetamine) or a 5-HT uptake blocker (fluoxetine) or a direct 5-HT agonist (CP 94253), significantly potentiates the locomotor activating effects of the DA uptake blocker methylphenidate. These results might seem in contradiction with previous studies showing that an increased serotonergic tone counteracts the behavioral, mostly rewarding, effects of the most abused DA uptake blocker cocaine (for a recent review, see Rothman *et al*, 2006). Also, 5-HT uptake blockers or a direct non-selective 5-HT receptor agonist were reported to enhance the discriminative stimulus properties of the selective DA uptake blocker GBR 12909 (Howell *et al*, 1997). On the other hand, genetic studies suggest that 5-HT is involved in the rewarding effects of cocaine (Uhl *et al*, 2002). Nevertheless, when dealing with specific 5-HT receptors, most studies demonstrate a facilitatory role of 5-HT_{1B} receptors on the biochemical, discriminative stimulus, motor, and rewarding effects of cocaine (Callahan and Cunningham, 1997; Lucas *et al*, 1997; Parsons *et al*, 1998; Castanon *et al*, 2000; Filip *et al*, 2001; Neumaier *et al*, 2002; Przegalinski *et al*, 2002; O'Dell and Parsons, 2004). The dampening effects of serotonergic drugs on the behavioral effects of cocaine or other psychostimulants are most probably related to a predominant stimulation of receptors other than 5-HT_{1B}, such as 5-HT_{2C} (Fletcher *et al*, 2002, 2006). Although the reasons why different 5-HT receptor subtypes are predominantly activated under different schedules of administration still need to be determined, 5-HT_{1B} receptors were the main 5-HT receptors involved in the results of the present study.

5-HT_{1B} receptors are mostly found presynaptically, in nerve terminals of serotonergic neurons (autoreceptors) and non-serotonergic neurons (heteroreceptors), and they are highly expressed in the basal ganglia, particularly in the terminals of the GABAergic striatal efferent neurons, that is globus pallidus, ventral pallidum, substantia nigra pars reticulata, and entopeduncular nucleus, where their stimulation inhibits GABA release (Bruinvels *et al*, 1993; Chadha *et al*, 2000; Sari, 2004). Therefore, the 5-HT_{1B} receptor-mediated serotonergic modulation of methylphenidate-induced locomotor activation demonstrated in the present study most probably involves 5-HT_{1B} receptors localized in the striatal projecting areas. Albeit with lower density, 5-HT_{1B} receptors are also localized in the dorsal and ventral striatum (caudate-putamen and NAc) and in the ventral tegmental area (VTA; Bruinvels *et al*, 1993; Sari, 2004). In the striatum, they are probably localized in GABAergic terminals, but they are also localized in glutamatergic terminals and their stimulation inhibits striatal glutamatergic neurotransmission (Morikawa *et al*, 2000). In the VTA, 5-HT_{1B} receptors seem to be localized primarily in the terminals of GABAergic neurons projecting from the NAc and they modulate GABA release (Morikawa *et al*, 2000; O'Dell and Parsons, 2004). Activation of 5-HT_{1B} receptors in the VTA, with the consequent disinhibition of dopaminergic cells that project to the NAc, potentiates cocaine-induced increases in NAc DA (O'Dell and Parsons, 2004). However, this mechanism does not seem to be involved in the present results, at least in the potentiating effect of methamphetamine on methylphenidate-induced locomotor activation, as DA release in the NAc induced by methylphenidate was not modified by pretreatment with methamphetamine. On the other hand, striatal 5-HT_{1B} receptors are probably involved, as the local administration of either a 5-HT_{1B} agonist or the 5-HT_{1B} antagonist GR 55562 in the NAc was shown to potentiate or counteract, respectively, cocaine-induced locomotor activation (Przegalinski *et al*, 2002). Furthermore, these effects were only observed in the shell of the NAc, the same area where DA and 5-HT were analyzed in the present study (Przegalinski *et al*, 2002).

In summary, the main finding of the present study is the demonstration of a strong synergistic pharmacological interaction between methylphenidate and a 5-HT_{1B} receptor agonist. The neurophysiological mechanism responsible for this interaction still needs to be determined. It is not known if drugs that enhance the locomotor stimulant effects of methylphenidate in the experimental animal can improve its therapeutic effect in patients with ADHD, but, in view of the widespread use of methylphenidate in ADHD, the study of potential therapeutic benefits of the combination of 5-HT_{1B} receptor agonists with methylphenidate merits investigation. Interestingly, 5-HT_{1B} receptor polymorphisms have been associated with some forms of ADHD (Hawi *et al*, 2002; Smoller *et al*, 2006), supporting the hypothesis that 5-HT_{1B} receptors could be a target for the development of drugs active on ADHD.

ACKNOWLEDGEMENTS

Work supported by National Institute on Drug Abuse intramural research funds.

DISCLOSURE/CONFLICT OF INTEREST

The author(s) declare that, except for income received from my primary employer, no financial support or compensation has been received from any individual or corporate entity over the past 3 years for research or professional service and there are no personal financial holdings that could be perceived as constituting a potential conflict of interest.

REFERENCES

- Barr AM, Panenka WJ, MacEwan GW, Thornton AE, Lang DJ, Honer WG *et al* (2006). The need for speed: an update on methamphetamine addiction. *J Psychiatry Neurosci* 31: 301–313.
- Baumann MH, Phillips JM, Ayestas MA, Ali SF, Rice KC, Rothman RB (2002). Preclinical evaluation of GBR12909 decanoate as a long-acting medication for methamphetamine dependence. *Ann NY Acad Sci* 965: 92–108.
- Berridge CW, Devilbiss DM, Andrzejewski ME, Arnsten AF, Kelley AE, Schmeichel B *et al* (2006). Methylphenidate preferentially increases catecholamine neurotransmission within the prefrontal cortex at low doses that enhance cognitive function. *Biol Psychiatry* 60: 1111–1120.
- Bishop C, Walker PD (2003). Combined intrastriatal dopamine D1 and serotonin 5-HT₂ receptor stimulation reveals a mechanism for hyperlocomotion in 6-hydroxydopamine-lesioned rats. *Neuroscience* 121: 649–657.
- Brown RT, Amler RW, Freeman WS, Perrin JM, Stein MT, Feldman HM *et al* (2005). Treatment of attention-deficit/hyperactivity disorder: overview of the evidence. *Pediatrics* 5: 749–757.
- Bruinvels AT, Palacios JM, Hoyer D (1993). Autoradiographic characterisation and localisation of 5-HT_{1D} compared to 5-HT_{1B} binding sites in rat brain. *Naunyn Schmiedeberg's Arch Pharmacol* 347: 569–582.
- Bubar MJ, McMahon LR, De Deurwaerdere P, Spampinato U, Cunningham KA (2003). Selective serotonin reuptake inhibitors enhance cocaine-induced locomotor activity and dopamine release in the nucleus accumbens. *Neuropharmacology* 44: 342–353.
- Callahan PM, Cunningham KA (1997). Modulation of the discriminative stimulus properties of cocaine: comparison of the effects of fluoxetine with 5-HT_{1A} and 5-HT_{1B} receptor agonists. *Neuropharmacology* 36: 373–381.
- Castanon N, Scarse-Levie K, Lucas JJ, Rocha B, Hen R (2000). Modulation of the effects of cocaine by 5-HT_{1B} receptors: a comparison of knockouts and antagonists. *Pharmacol Biochem Behav* 67: 559–566.
- Chadha A, Sur C, Atack J, Duty S (2000). The 5HT_{1B} receptor agonist, CP-93129, inhibits [(3)H]-GABA release from rat globus pallidus slices and reverses akinesia following intrapallidal injection in the reserpine-treated rat. *Br J Pharmacol* 130: 1927–1932.
- Chait LD (1994). Reinforcing and subjective effects of methylphenidate in humans. *Behav Pharmacol* 5: 281–288.
- Chinen CC, Faria RR, Frussa-Filho R (2006). Characterization of the rapid-onset type of behavioral sensitization to amphetamine in mice: role of drug-environment conditioning. *Neuropsychopharmacology* 31: 151–159.
- Cunningham KA, Callahan PM (1991). Monoamine reuptake inhibitors enhance the discriminative state induced by cocaine in the rat. *Psychopharmacology* 104: 177–180.
- Czoty PW, Ramanathan CR, Mutschler NH, Makriyannis A, Bergman J (2004). Drug discrimination in methamphetamine-trained monkeys: effects of monoamine transporter inhibitors. *J Pharmacol Exp Ther* 311: 720–727.

- Elliott JM, Beveridge TJ (2005). Psychostimulants and monoamine transporters: upsetting the balance. *Curr Opin Pharmacol* 5: 94–100.
- Filip M, Nowak E, Papla I, Przegalinski E (2001). Role of 5-hydroxytryptamine_{1B} receptors and 5-hydroxytryptamine uptake inhibition in the cocaine-evoked discriminative stimulus effects in rats. *J Physiol Pharmacol* 52: 249–263.
- Fletcher PJ, Korth KM, Robinson SR, Baker GB (2002). Multiple 5-HT receptors are involved in the effects of acute MDMA treatment: studies on locomotor activity and responding for conditioned reinforcement. *Psychopharmacology* 162: 282–291.
- Fletcher PJ, Sinyard J, Higgins GA (2006). The effects of the 5-HT_{2C} receptor antagonist SB242084 on locomotor activity induced by selective, or mixed, indirect serotonergic and dopaminergic agonists. *Psychopharmacology* 187: 515–525.
- Fletcher PJ, Sinyard J, Salsali M, Baker GB (2004). Fluoxetine, but not sertraline or citalopram, potentiates the locomotor stimulant effect of cocaine: possible pharmacokinetic effects. *Psychopharmacology* 174: 406–413.
- Han DD, Gu HH (2006). Comparison of the monoamine transporters from human and mouse in their sensitivities to psychostimulant drugs. *BMC Pharmacol* 6: 6.
- Hanson GR, Sandoval V, Riddle E, Fleckenstein AE (2004). Psychostimulants and vesicle trafficking: a novel mechanism and therapeutic implications. *Ann NY Acad Sci* 1025: 146–150.
- Hawi Z, Dring M, Kirley A, Foley D, Kent L, Craddock N et al (2002). Serotonergic system and attention deficit hyperactivity disorder (ADHD): a potential susceptibility locus at the 5-HT_{1B} receptor gene in 273 nuclear families from a multi-centre sample. *Mol Psychiatry* 7: 718–725.
- Herges S, Taylor DA (1998). Involvement of serotonin in the modulation of cocaine-induced locomotor activity in the rat. *Pharmacol Biochem Behav* 59: 595–611.
- Holtzman SG (2001). Differential interaction of GBR 12909, a dopamine uptake inhibitor, with cocaine and methamphetamine in rats discriminating cocaine. *Psychopharmacology* 155: 180–186.
- Howell LL, Czoty PW, Byrd LD (1997). Pharmacological interactions between serotonin and dopamine on behavior in the squirrel monkey. *Psychopharmacology* 131: 40–48.
- Hurd YL, Ungerstedt U (1989). Ca²⁺ dependence of the amphetamine, nomifensine, and Lu 19-005 effect on *in vivo* dopamine transmission. *Eur J Pharmacol* 166: 261–269.
- Koe BK, Nielsen JA, Macor JE, Heym J (1992). Biochemical and behavioral studies of the 5-HT_{1B} receptor agonist, CP-94,253. *Drug Dev Res* 26: 241–250.
- Kuczenski R, Segal DS (1997). Effects of methylphenidate on extracellular dopamine, serotonin, and norepinephrine: comparison with amphetamine. *J Neurochem* 68: 2032–2037.
- Kuczenski R, Segal DS (1999a). Sensitization of amphetamine-induced stereotyped behaviors during the acute response. *J Pharmacol Exp Ther* 288: 699–709.
- Kuczenski R, Segal DS (1999b). Dynamic changes in sensitivity occur during the acute response to cocaine and methylphenidate. *Psychopharmacology* 147: 96–103.
- Kuczenski R, Segal DS (2002). Exposure of adolescent rats to oral methylphenidate: preferential effects on extracellular norepinephrine and absence of sensitization and cross-sensitization to methamphetamine. *J Neurosci* 22: 7264–7271.
- Kuczenski R, Segal DS, Cho AK, Melega W (1995). Hippocampus norepinephrine, caudate dopamine and serotonin, and behavioral responses to the stereoisomers of amphetamine and methamphetamine. *J Neurosci* 15: 1308–1317.
- Lucas JJ, Segu L, Hen R (1997). 5-Hydroxytryptamine_{1B} receptors modulate the effect of cocaine on c-fos expression: converging evidence using 5-hydroxytryptamine_{1B} knockout mice and the 5-hydroxytryptamine_{1B/1D} antagonist GR127935. *Mol Pharmacol* 51: 755–763.
- Matthews JN, Altman DG, Campbell MJ, Royston P (1990). Analysis of serial measurements in medical research. *BMJ* 300: 230–235.
- Morikawa H, Manzoni OJ, Crabbe JC, Williams JT (2000). Regulation of central synaptic transmission by 5-HT_{1B} auto- and heteroreceptors. *Mol Pharmacol* 58: 1271–1278.
- Neumaier JF, Vincow ES, Arvanitogiannis A, Wise RA, Carlezon Jr WA (2002). Elevated expression of 5-HT_{1B} receptors in nucleus accumbens efferents sensitizes animals to cocaine. *J Neurosci* 22: 10856–10863.
- O'Dell LE, Parsons LH (2004). Serotonin_{1B} receptors in the ventral tegmental area modulate cocaine-induced increases in nucleus accumbens dopamine levels. *J Pharmacol Exp Ther* 311: 711–719.
- Parsons LH, Weiss F, Koob GF (1998). Serotonin_{1B} receptor stimulation enhances cocaine reinforcement. *J Neurosci* 18: 10078–10089.
- Pontieri FE, Tanda G, Di Chiara G (1995). Intravenous cocaine, morphine, and amphetamine preferentially increase extracellular dopamine in the 'shell' as compared with the 'core' of the rat nucleus accumbens. *Proc Natl Acad Sci USA* 92: 12304–12308.
- Preti A (2000). Vanorexine national institute on drug abuse. *Curr Opin Investig Drugs* 1: 241–251.
- Przegalinski E, Filip M, Papla I, Czepl K (2002). Effects of 5-HT_{1B} receptor ligands microinjected into the accumbal shell or core on the cocaine-induced locomotor hyperactivity in rats. *J Physiol Pharmacol* 53: 383–394.
- Rothman RB, Blough BE, Baumann MH (2006). Dual dopamine-5-HT releasers: potential treatment agents for cocaine addiction. *Trends Pharmacol Sci* 27: 612–618.
- Sandoval V, Riddle EL, Hanson GR, Fleckenstein AE (2003). Methylphenidate alters vesicular monoamine transport and prevents methamphetamine-induced dopaminergic deficits. *J Pharmacol Exp Ther* 304: 1181–1187.
- Sari Y (2004). Serotonin_{1B} receptors: from protein to physiological function and behavior. *Neurosci Biobehav Rev* 28: 565–582.
- Skjoldager P, Winger G, Woods JH (1993). Analysis of fixed-ratio behavior maintained by drug reinforcers. *J Exp Anal Behav* 56: 331–343.
- Smoller JW, Biederman J, Arbeitman L, Doyle AE, Fagerness J, Perlis RH et al (2006). Association between the 5HT_{1B} receptor gene (HTR1B) and the inattentive subtype of ADHD. *Biol Psychiatry* 59: 460–467.
- Sulzer D, Sonders MS, Poulsen NW, Galli A (2005). Mechanisms of neurotransmitter release by amphetamines: a review. *Prog Neurobiol* 75: 406–433.
- Torres GE, Gainetdinov RR, Caron MG (2003). Plasma membrane monoamine transporters: structure, regulation and function. *Nat Rev Neurosci* 4: 13–25.
- Uhl GR, Hall FS, Sora I (2002). Cocaine, reward, movement and monoamine transporters. *Mol Psychiatry* 7: 21–26.
- Villemagne VL, Wong DF, Yokoi F, Stephane M, Rice KC, Matecka D et al (1999). GBR12909 attenuates amphetamine-induced striatal dopamine release as measured by [(11)C]raclopride continuous infusion PET scans. *Synapse* 33: 268–273.
- Volkow ND, Swanson JM (2003). Variables that affect the clinical use and abuse of methylphenidate in the treatment of ADHD. *Am J Psychiatry* 160: 1909–1918.
- Zetterstrom T, Sharp T, Collin AK, Ungerstedt U (1988). *In vivo* measurement of extracellular dopamine and DOPAC in rat striatum after various dopamine-releasing drugs; implications for the origin of extracellular DOPAC. *Eur J Pharmacol* 148: 327–334.